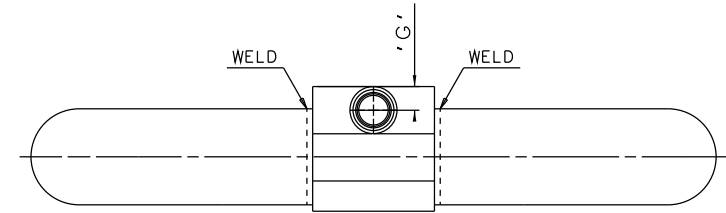
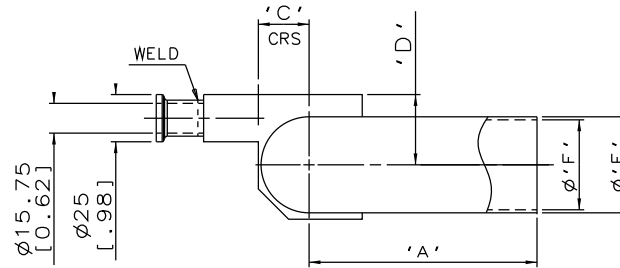
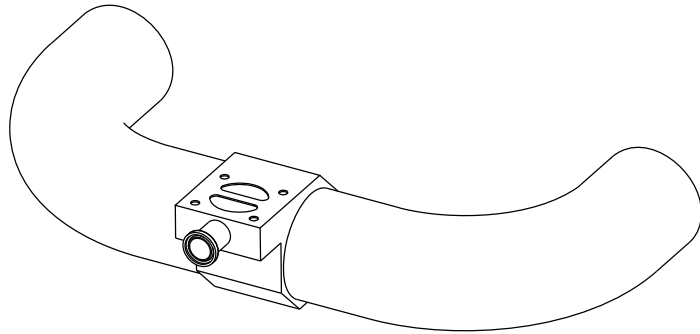


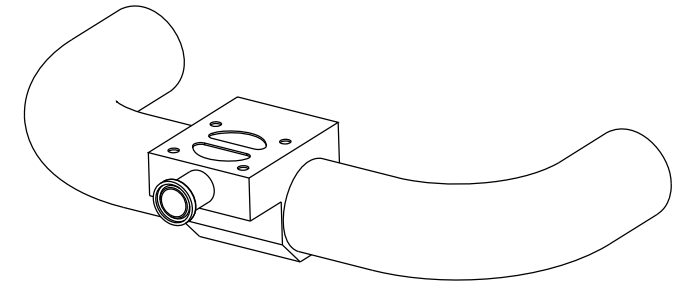
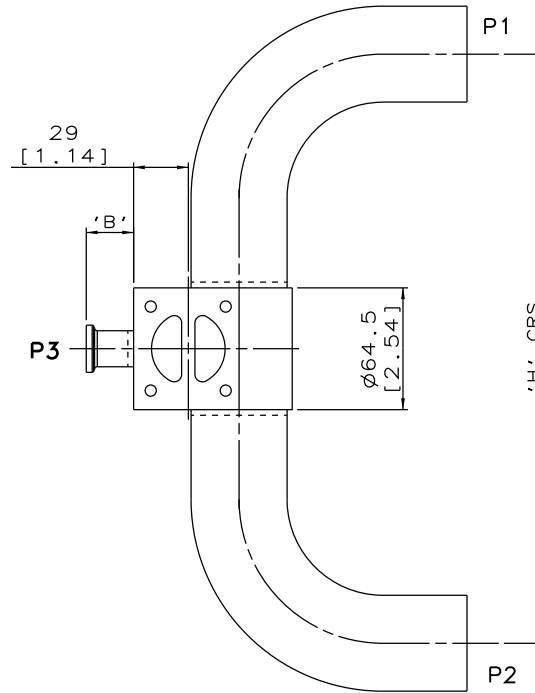
DN20/0.75
MAINLINE ONLY



DN25/1.00 TO DN65/2.50
MAINLINE ONLY



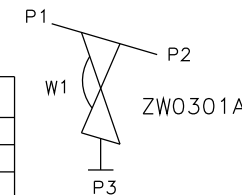
DN80/3.00 TO DN100/4.00
MAINLINE ONLY



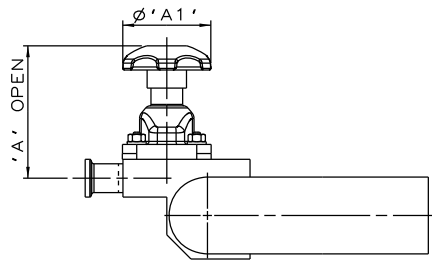
The information on this sheet is Private and Confidential and is the property of Crane Process Flow Technologies Limited and must not be published directly or indirectly in any manner whatsoever without the written permission of the Company and must not be used in any way detrimental to their interests.
© Crane Process Flow Technologies

CRANE Process Flow Technologies A Crane Co. Company		Saunders The Science Inside	
Title SCHEDULE OF LEADING DIMENSIONS FOR DN20/0.75 WEIR POINT OF USE 'T' BODY COMPLETE WITH : MAINLINE : BUTT WELD OD TUBE ENDS BRANCH : DN20/0.75 HYGIENIC CLAMP END			
Drawn R1	Date 14.10.11	UNCONTROLLED IN HARD COPY FORMAT	
Checked RND	Date 21.03.12	Drawing No.	Issue.
First Angle Projection Method E	DO NOT SCALE	WEB-043	2

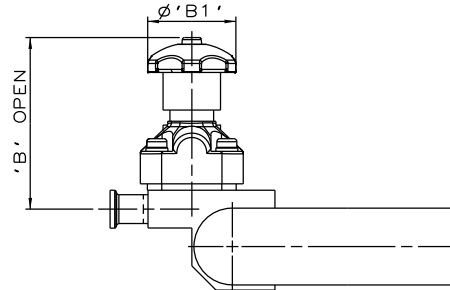
MAINLINE SIZE		A		B		C		D		ØE		ØF		G		H		BODY WEIGHT
mm	inch	mm	inch	mm	inch	mm	inch	mm	inch	mm	inch	mm	inch	mm	inch	mm	inch	Kgs
DN20	0.75	76.2	3.00	25.0	0.98	10.9	0.43	20.0	0.79	19.05	0.75	15.75	0.62	12.5	0.49	222.9	8.78	0.9
DN25	1.00	76.2	3.00	25.0	0.98	14.9	0.59	26.0	1.02	25.4	1.00	22.1	0.87	12.5	0.49	222.9	8.78	1.1
DN40	1.50	95.3	3.75	25.0	0.98	20.5	0.81	32.0	1.26	38.1	1.50	34.8	1.37	12.5	0.49	261.1	10.28	1.4
DN50	2.00	120.7	4.75	25.0	0.98	26.9	1.06	37.2	1.46	50.8	2.00	47.5	1.87	12.5	0.49	311.9	12.28	2.0
DN65	2.50	139.8	5.50	25.0	0.98	33.6	1.32	42.5	1.67	63.5	2.50	60.2	2.37	12.5	0.49	350.1	13.78	2.5
DN80	3.00	158.8	6.25	25.0	0.98	39.5	1.56	46.2	1.82	76.2	3.00	72.9	2.87	12.5	0.49	402.1	15.83	2.9
DN100	4.00	203.2	8.00	25.0	0.98	52.3	2.06	58.2	2.29	101.6	4.00	97.38	3.83	12.5	0.49	490.9	19.33	5.4



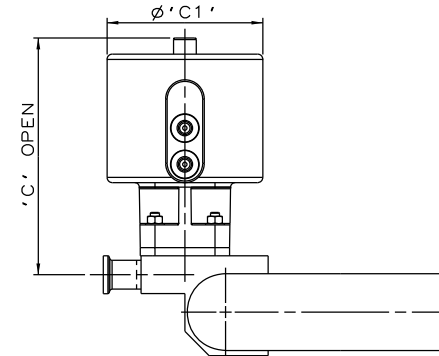
ORIENTATION AS
PER P&ID DIAGRAM
FOR OPTIMUM
DRAINABILITY.



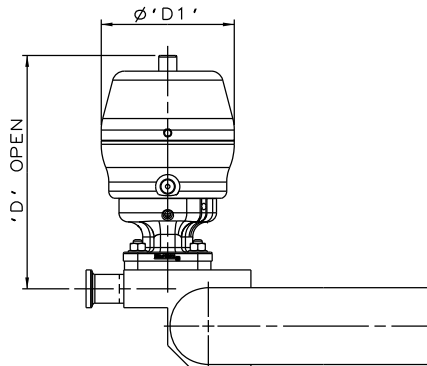
SS NON SEALED
BONNET ASSEMBLY



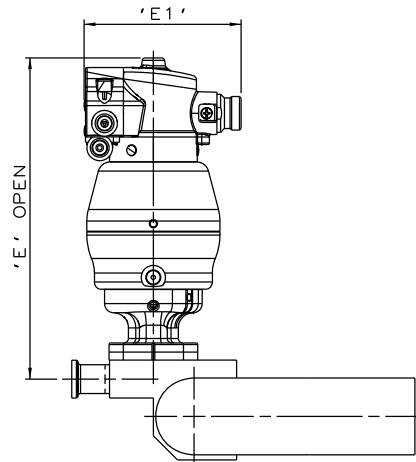
PES BONNET
ASSEMBLY



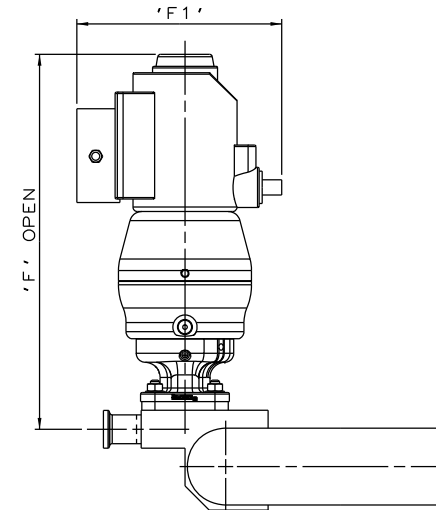
EC ACTUATOR
(ALL MODES)



*S360 ACTUATOR



*S360 ACTUATOR
WITH M-VUE SENSOR



*S360 ACTUATOR
WITH I-VUE SENSOR

The information on this sheet is Private and Confidential and is the property of Crane Process Flow Technologies Limited and must not be published directly or indirectly in any manner whatsoever without the written permission of the Company and must not be used in any way detrimental to their interests.
© Crane Process Flow Technologies

CRANE	Process Flow Technologies A Crane Co. Company	Saunders The Science Inside
--------------	--	---------------------------------------

Title
SCHEDULE OF LEADING DIMENSIONS FOR DN20/0.75 WEIR
"T" BODY (DN20/0.75 BRANCH) WITH MAINLINE BUTT WELD
OD TUBE ENDS, BRANCH TRI-CLAMP END,
FITTED WITH TOPWORKS OPTIONS

Drawn R1	Date 28.06.16	UNCONTROLLED IN HARD COPY FORMAT
Checked RND	Date 28.06.16	
First Angle Projection Method E	DO NOT SCALE	Drawing No. WEB-043-ASSY
		Issue. 1

* DIMENSIONS SHOW MAXIMUM ENVELOPE FOR ALL MODES

BRANCH SIZE	A		A1		B		B1		C		C1		D		D1		E		E1		F		F1		
	mm	inch	mm	inch	mm	inch	mm	inch	mm	inch	mm	inch	mm	inch	mm	inch	mm	inch	mm	inch	mm	inch	mm	inch	
DN20	0.75	87.5	3.44	62.0	2.44	113.5	4.47	62.0	2.44	156.5	6.16	103.0	4.05	163.5	6.44	98.0	3.87	224.5	8.84	103.8	4.09	259.5	10.22	136.0	5.35